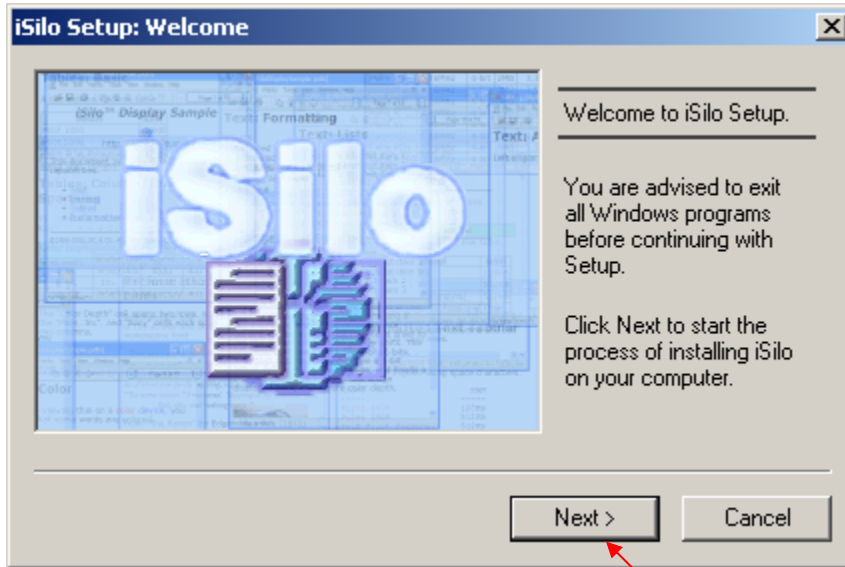


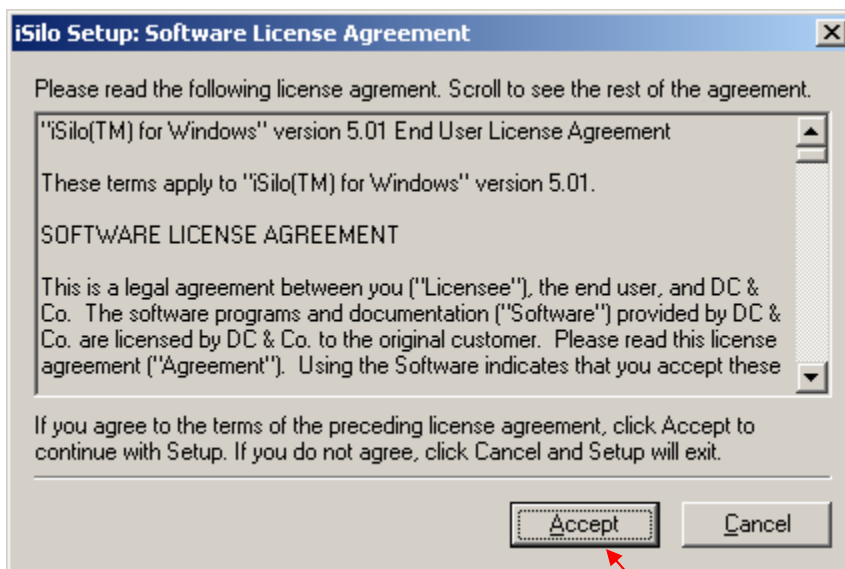
# iSilo Software Installation Wizard

## 1. iSilo Setup Welcome screen, click "Next" button



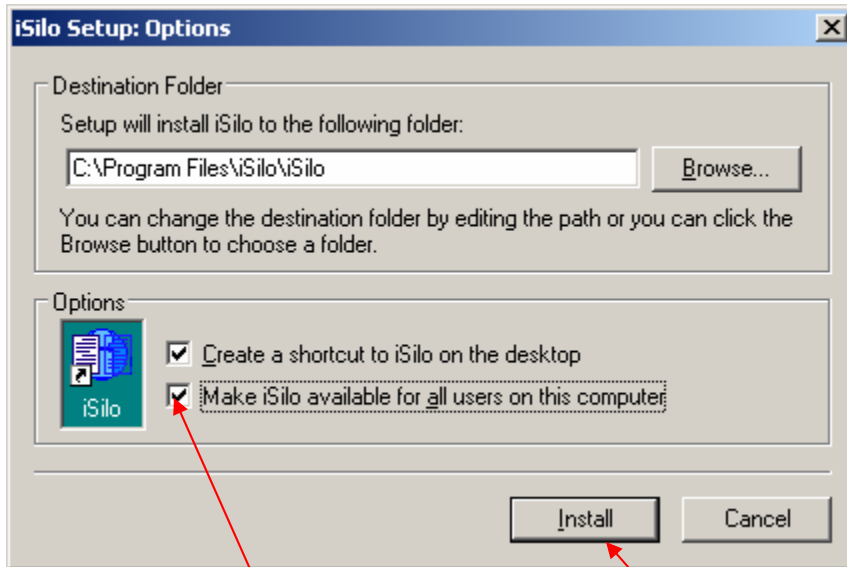
Click "Next"

## 2. Click "Accept" button



Click "Accept"

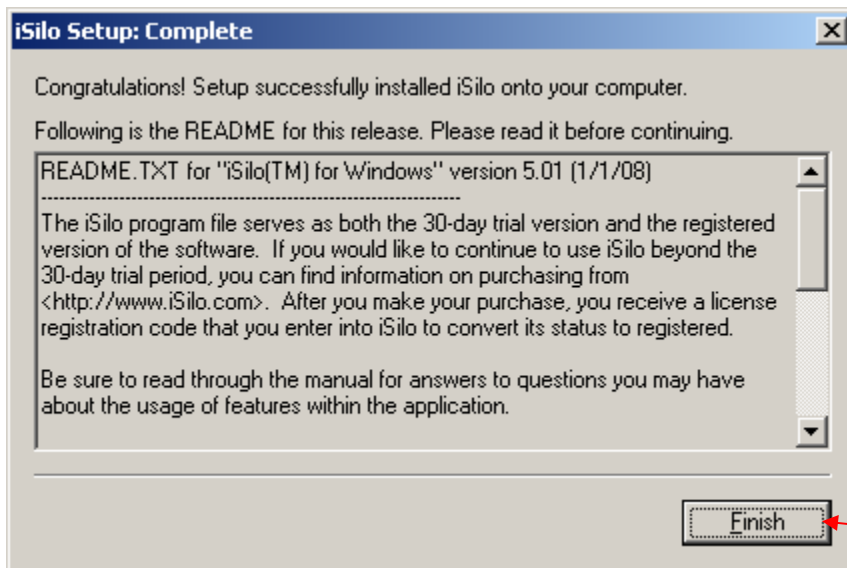
3. Tick check box "Make iSilo available for all..." and then click "Install" button



Tick here

Click "Install"

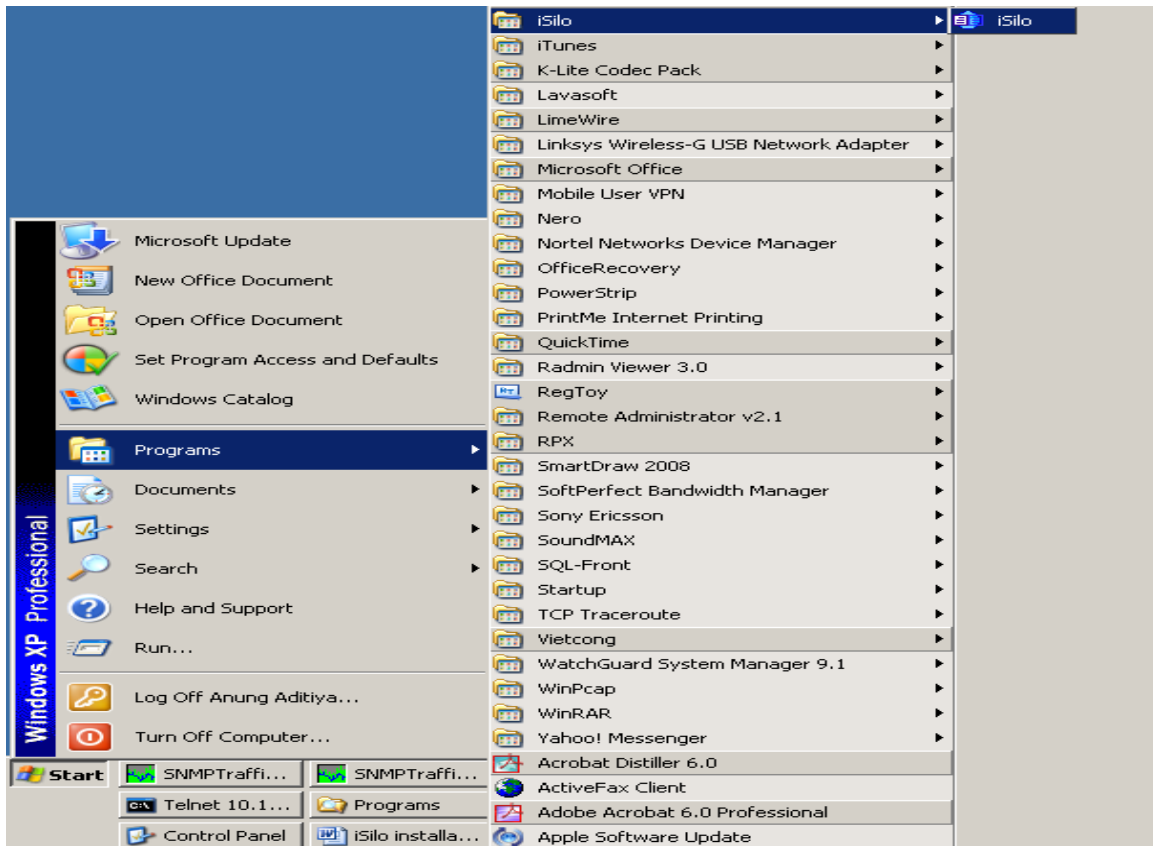
4. Click "Finish" button



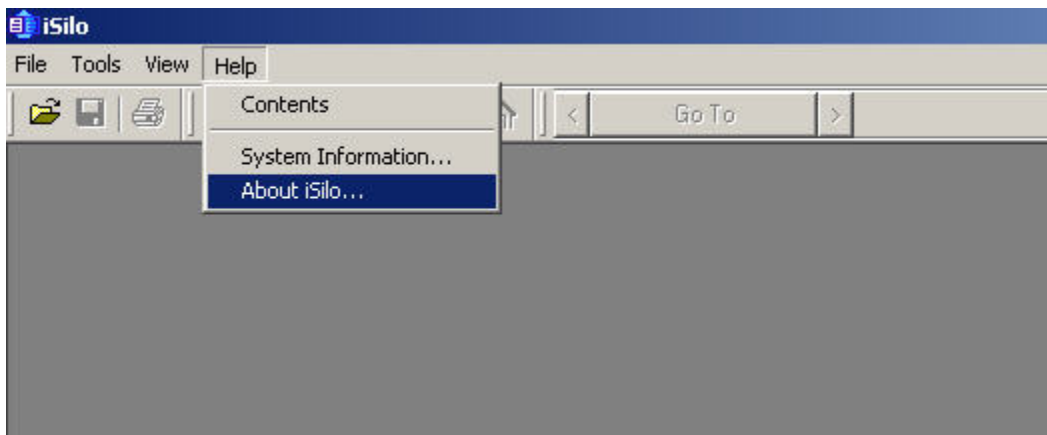
Click "Finish"

# iSilo Registration Wizard

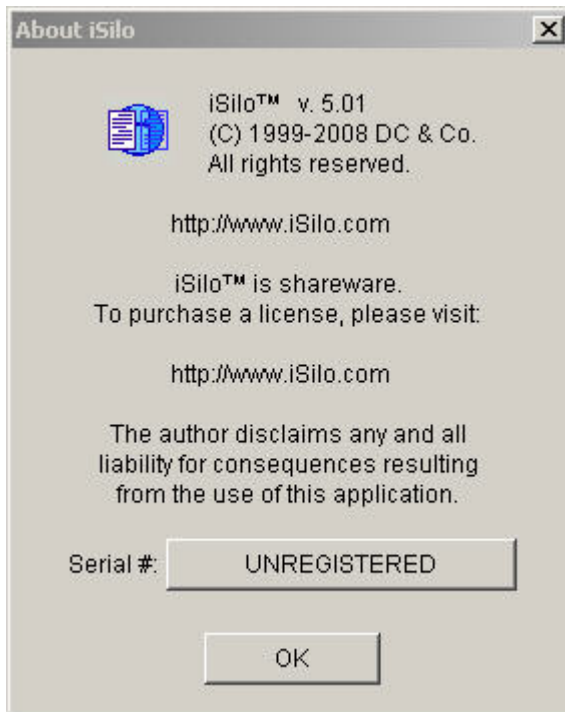
1. Click Start – Program – iSilo.



2. Click "Help" then "About iSilo".



3. **“About iSilo” window open shows that the iSilo software still unregistered.**



4. **Click “Unregistered” button, then enter the registration number on the “Enter license registration code” column (ask ITD Helpdesk for this number).**



5. Once you've entered the correct registration number, your iSilo software should status should be like below picture.

